



CITY UNIVERSITY OF LONDON

EXCHANGE REPORT
City, University of London, U.K.
Cass Business School

Chow Yi Lok
Spring 2018

Table of Contents

Part 1 Monthly Activity Log	3
Part 2 General Exchange Information	5
Visa Procedures	5
Orientation Activities	5
International Services & Activities	5
Accommodations	5
Course Registration	6
Teaching & Assessment Methods	6
Sports & Recreation Facilities	6
Finance & Banking (including currency/ expenses)	6
Social Clubs & Networking Opportunities	7
Health & Safety	7
Food	7
Transportation	7
Climate	7
Communication	8
Part 3 Items to Bring	8
Part 4 Useful Links and Contacts	8



Part 1 Monthly Activity Log

January 2018

I arrived in London 3 days before the start of the orientation to get settled down. As the dormitory, Liberty Hall, is just a 10-minute walk away from the Angel tube station, it was pretty convenient although I arrived very early in the morning. To get to Angel was a 1-hour journey via Piccadilly Line from Heathrow Airport to King's Cross station, then 1 stop away via Northern Line. Rooms of most exchange students from Hong Kong were arranged adjacent to each other and as we shared the same kitchen, we quickly got to know each other.

February 2018

The workload was relatively light at the beginning of the semester so I had very much free time strolling around the city as well as visiting other cities in the U.K.. Together with another exchange student from Hong Kong, I had visited the Camden Market and Brick Lane Market in London which I found very lively. There are many street performers, hand-made products, varieties of street food, punks, graffiti,... A grand display of how much they embrace diversity. I have also visited quite a few nice bookstores in the city, like the Persephone Books who reprints and sells neglected fiction and non-fiction by mid-twentieth century (mostly) women writers.

March 2018

I had been to a few places in March, like the Lake District, Manchester and York, Ireland. It was quite cold in March and it had been snowing a lot in the beginning of the month. But this also made my trip to the Lake District a pretty special one. Most people would choose to visit the Lake District after March when the weather is more stable and flowers start to sprout up. Due to different reasons we do not have choice but to visit there earlier. The weather condition was not as good but the trip turns out to be quite nice as we got to see the different Lake District. It was freezing cold but still very pretty.

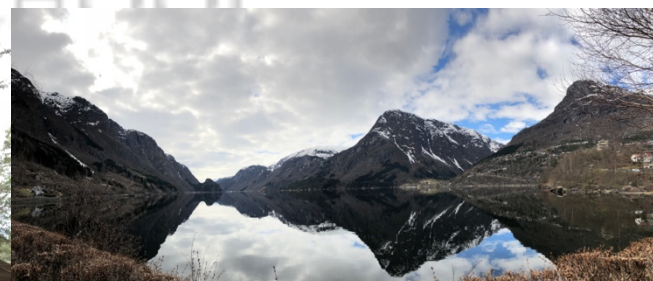
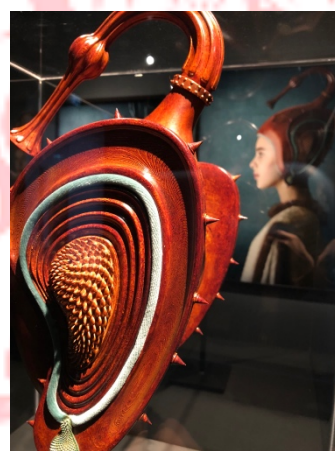
As I was enrolled in the Performing Arts in London course, I got to watch five live performances (course fee £50). The lecturer brought us to watch two plays and one opera this month. I had also watched the Aladdin musical. Every production was very impressive.

April 2018

As CASS Business School does not have reading week and the exams took place before the vacation (due to the fact that most exchange students chose the alternative assessment option), the semester seemed to end quite early comparing to other university.

Before the start of the vacation, most of us did not go travelling but focused more on revisions and group assignments.

The vacation officially started on 19 April and I started my travelling plan right away. I went to Scotland on my own where I made friends with people who shared the same room at the hostel, then to visit my friend in the Northern Europe, followed by Morocco and Greece.



Part 2 General Exchange Information

Visa Procedures

Hong Kong passport holder does not have to apply for a visa. According to the UK government website, you should bring documents to show at the border:

- that you has been accepted on a course by an accredited institution like a letter of acceptance from the institution
- are able to fund your stay in the UK and return journey
- intend to leave the UK at the end of your course
- details of where you intend to stay

You should always have these documents with you if you're travelling in and out of the UK during your stay. Holders of other country's passport may also check if you need a U.K. passport from the government website.

Orientation Activities

The school has arranged an orientation before the start of the semester. Information about the courses, course registration, sports and recreation facilities, etc. are given during the welcome talk. Some gatherings and parties are also organized for students to make new friends.

International Services & Activities

If you have any inquiries regarding the exchange programme, you can visit the exchange office or contact the student exchange coordinator.

Accommodations

The Liberty Hall is quite convenient and just a 10-minute walk away from the tube station. There are bus stops right across the street as well. You can easily access to the post office and supermarkets. Free printing is offered at the dormitory (but there will be ads at the bottom of your printings) Kitchen is shared among 10 students and each will have our own cabinet and drawer. Pillow, blanket, cutleries and a saucepan are included in the welcoming package.

Course Registration

You will receive an online form for filling out a draft module selection before the start of the semester to give the school an idea on what you would like to study. You will have to submit the form again to inform the school of your final module selection by the end of teaching week 1. For modules that have been capped might not be able to accommodate any more exchange students who have not stated the module in their first module selection application.

Teaching & Assessment Methods

Each course would have a two-hour lecture every week. Courses are assessed by coursework and examination, varies among modules. A grade of 40% for each component of the course is required to pass. Attendance is taken via Moodle(an online platform which is similar to Canvas), by submitting a word given by the lecturer in every class.

Course	UST Equivalence	Assessment Method
AF2202 Principles of Taxation	N/A	Group assignment, individual assignment
AF3203 Advanced Financial Accounting: Theory and Practice	N/A	Mid-term test, Essay
AS2021 Decision Analysis	ISOM3900 Decision Analytics (3 Cr)	Group assignment, individual assignment
LA2017 Performing Arts in London	HMCCUCORE Common Core Course in Humanities (4 Cr)	Group presentation, Final exam

Sports & Recreation Facilities

There is an official sports venue at City, University of London called CitySport. You can purchase a membership which costs around £26.5/month and different fitness classes are included.

Finance & Banking (including currency/ expenses)

If you wish to open a bank account while you are here you will need to contact the Student Centre for a letter. As you are studying here for just one term, it could be a bit complicated and difficult. I have opened an account at the Barclays and have friends succeeded in opening an account at the NatWest Bank. Most of

the time, I use debit card for payment as it is more convenient especially when I would like to split the bill with my friends. Money transfer(same bank/across banks)can be easily done via mobile app without any administration charges.

The dormitory contract costs GBP 4185 for 5 months. Expense on food depends on how often you eat out. A lunch(for example, spaghetti)costs around GBP 10. Many shops do offer student discounts.

It is better to plan your travel early ahead in order to get cheaper tickets and accommodations.

Social Clubs & Networking Opportunities

Orientation was organized by school to give a school and programme overview. There were also parties for students to get to know each other or to simply relax.

Health & Safety

It is pretty safe in London in general but still have to watch out pickpockets in crowded areas or tourist spots.

You have to register for a general practitioner first if you would like to visit a doctor. It could take a few days to make an appointment.

Food

London offers a great varieties of food. Eating out is relatively expensive but cheaper ones can also be found in food markets, like Camden Market, Brick Lane market, and Borough Market. The best way to save money must be cooking meal by yourself. Grocery shopping is quite cheap.

Transportation

I used an Oyster card for transportation in London. It is similar to Octopus card but cannot be used for shopping in-store. If you will be travelling around the U.K. by rail a lot, you may consider purchasing a 16-25 railcard which costs £30. If you have a 16-25 railcard and have it added to your Oyster card you can get discounts on off-peak fare on all rail services.

Climate

It is quite cold from January to March. It snowed on the first day I arrived in London. It is dry as well comparing to Hong Kong so I easily got cracks on my skin. No air conditioning but heating around,

so it can get quite warm indoor. So it is better to wear layers of thin clothes to accommodate the cold weather outside and warm temperature indoor.

Communication

A free giffgaff sim card is included in the Liberty Living welcoming package. You only have to register and top-up online before use. Different data plans are offered. The sim can be used around Europe.

Part 3 Items to Bring

- Programme Acceptance letter
- Insurance copy
- Medicine
- Small suitcase, Padlocks, Universal adapter (*for travelling*)
- Passport
- Details of intended stay
- Down jacket, umbrella, scarf, gloves
- Cash

Part 4 Useful Links and Contacts

CASS Business School Undergraduate Modules Catalog

<https://www.cass.city.ac.uk/student-intranet/your-academic-journey/modules>

Check if you need a visa

<https://www.gov.uk/check-uk-visa>

Citysport

<https://www.citysport.org.uk>

Tube and rail fares

<https://tfl.gov.uk/fares-and-payments/fares/tube-dlr-lo-fares?intcmp=43916#on-this-page-2>

16-25 Railcard

http://www.nationalrail.co.uk/times_fares/prd359000a04000200b5da61f1e92b72.aspx